

Easy

***Status
Poller***



Adds Extended Status Polling to SNMPc

January 2005

Easy Software AB
Strandvägen 96
S-791 43 Falun
Sweden

www.easysoft.se

System Description

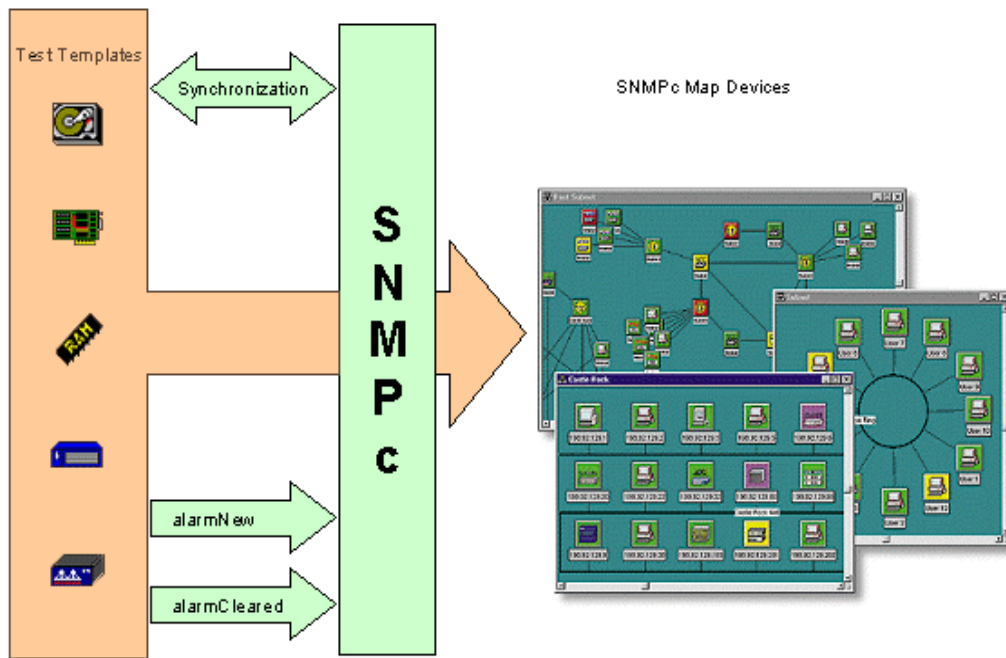


Figure 1. Flow chart

When starting Easy SP a synchronization performs with the map database in SNMPc. A polling process is added for every device in SNMPc that has an icon that corresponds to an icon on a Status Test in Easy SP. Devices are polled at regular intervals and status information is sent to SNMPc as internal traps. Every midnight a new synchronization performs with SNMPc to check if any devices should be added/removed from the polling processes.

If not all monitored objects in a Status Test is passed, an alarmNew-trap is sent to SNMPc along with status information. All polled devices/instances has uniq trapId's, and a fired trap event is bound to the corresponding device in SNMPc. An alarmCleared-trap is sent if there exist an alarm on a device/instance, and all monitored objects is passed in the Status Test.

A Status Tests can be of the type Single Instance or Table Instance. All data types (integers, counters and string values) can be monitored.

Key Product Features:

1. **Integration** - easy integration with SNMPc.
2. **Templates** - by using test templates many devices/instances can be monitored with minimal administration.
3. **Pre-configured Templates** - choose among a number of pre-configured test templates for monitoring of cpu, disk, processes, duplex problem etc.
4. **Synchronization** - by performing a synchronization at regular intervals with SNMPc, devices are automatically added/removed from Status Tests.
5. **Alarms** - when a threshold is crossed a trap is sent to SNMPc.
6. **Data types** - all data types can be monitored.
7. **Windows Service** - runs as Windows Service.

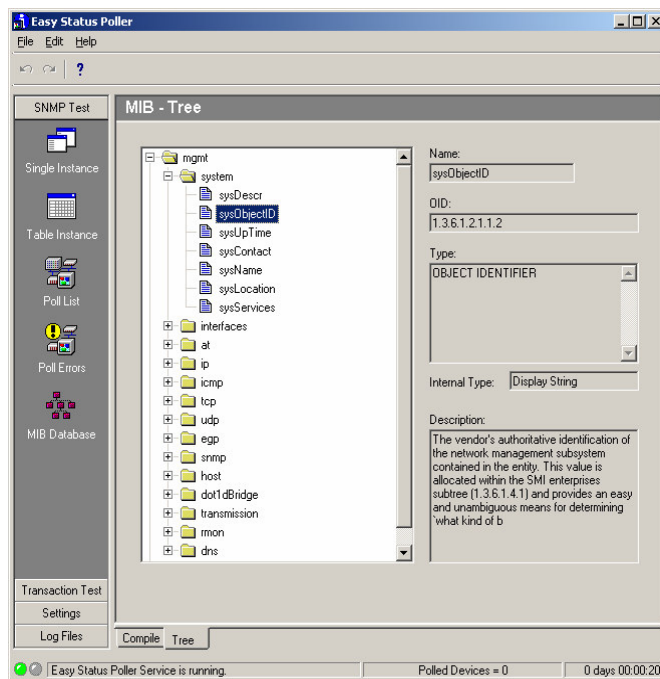
Getting Started

Installation:

1. Install the software on the computer running SNMPc.
2. From the Start menu choose - "Easy Status Poller".

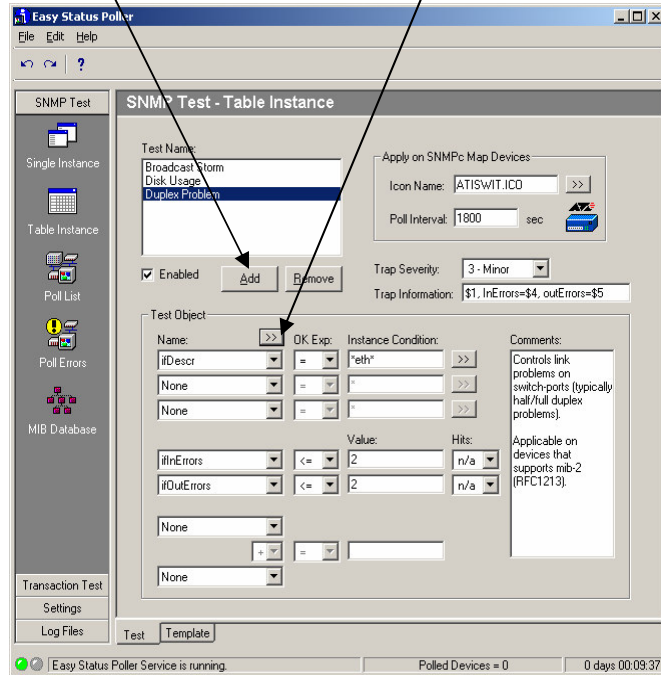
Step 1. Before you add any test we recommend you to use SNMPc to find the SNMP object(s) you would like to monitor, and what threshold value(s) you should trigger on. If the object(s) is columnar-objects you choose 'Table Instance' otherwise 'Single Instance'.

Step 2. Make sure the MIB file is compiled. Go to 'MIB Database' and browse the MIB Tree for the object(s). If the object is not to be found you must add the MIB file. Adding a MIB file is the same process as in SNMPc - copy the file to the Mibfiles directory and do a new compilation.



Step 3. Add Test. Click ‘Add’ and give the test a descriptive name. Click ‘>>’ to bring up the MIB Tree and choose object(s) by right-clicking in the MIB Tree. Choose an icon, poll interval and set up threshold values.

As a first step we recommend you to only execute this test on one single device in SNMPc (edit one of the devices of interest in SNMP to a uniq icon). After the test is running properly (no Poll Errors) you edit to the icon that matches all devices of interest SNMPc.



Step 4. To properly decode the Poll Status traps in SNMPc you must copy the MIB file easysoft.mib from the Easy SP install directory to SNMPc Mibfiles. Add the file to the compile list and recompile the MIB database in SNMPc.

Step 5. Choose ‘Restart Polling’ on the File menu in Easy SP. Within one minute the matching devices will be displayed in the Poll List. Every device in the poll list has its own poll cycle. All polls is trotted through a queue.

*** Press F1 to get context-sensitive Help ***