

## SNMPC OnLine

*"The new SNMPC Online provides a clean, professional-looking and intuitive web interface that is easy to access, easy to customize and easy to understand. With SNMPC and SNMPC Online you have your total solution."*

Shaun Sturby, Technical Services Manager - Optrics Engineering

SNMPC OnLine is an advanced reporting engine for the SNMPC Network Management System. With a dynamic web based console and flexible presentation options including Microsoft Visio Graphics, pre-canned reports, and custom dashboards, SNMPC Online gives you unprecedented network and application visibility.

### ▶ NetFlow Application Monitoring

Comprehensive NetFlow and sFlow support delivering deep insight into application usage and top talkers on your network.

### ▶ Specialized Reporting

Get "out-of-the-box" results with optimized report formats for network availability and latency, router and switch performance, server CPU and disk metrics, and for selected vendor's devices.

### ▶ High Level Overviews

Display multiple reports in a single Top N dashboard view. Concise one screen interface delivers network overview and "to do list" for potential network issues.

### ▶ Custom Dashboards

Mix and match information from multiple reports and devices on personalized web pages with versatile graphic elements including dials, 3d-graphs, tables, charts, event views and node lists.

### ▶ Scalable Architecture

Manage large global networks with geographic or organization based report grouping and SNMPC's distributed polling capabilities.

### ▶ Multi-User Security

Restrict capabilities and reports available to each user based on their needs and responsibilities. An ideal solution for Management Service Providers.



NetFlow Monitoring

### ▶ Multi-Vendor Support

Monitor performance metrics and SNMP alerts from any SNMP v1, v2, or v3 enabled device, regardless of vendor. A future proof solution that adapts to your requirements as your network evolves.

### ▶ Seamless Integration

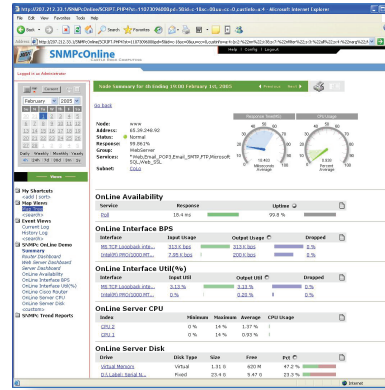
SNMPC Enterprise node information, event logs, and existing trend reports are immediately available and updated in real time.

# SNMPC OnLine

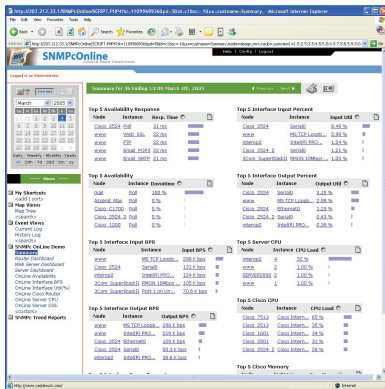
## Sample Report Styles



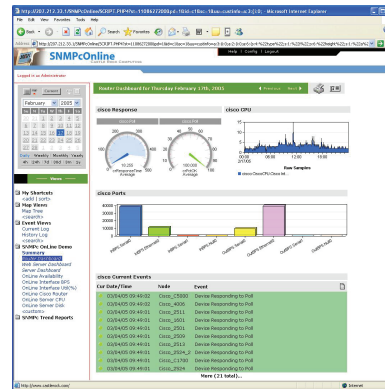
Network Overview



Detailed Device View



Top-N Report Summary



Custom Router Dashboard

### System Requirements

WebServer:	Apache (included) or Microsoft IIS
Database:	Microsoft SQL Server 2005 (Express Edition included)
Operating Systems:	Windows 2008r2, 2012, 7, 8
Graphics Application:	Microsoft Visio 2010 (optional)
CPU:	Intel 2Ghz+
Memory:	8GB RAM
Disk Space:	100Gb



12930 Saratoga Ave, Saratoga, CA 95070 USA

408.366.6540

sales@castlerock.com

www.castlerock.com